

## Convert a standard post to a corner post or post for double sided use



**Method 1** Mount a 12mm / 1/2" steel tape along each edge of the post side to be used as an external corner or reverse side for double-sided graphic mounting.

– This method is not so strong but you **can use beams** in this side!



**Method 2** Mount a 24 mm / 1" magnetic B-tape in the centre on that side you want to use as an external corner or reverse side with double sided use. Start 15 mm from the top hub.

– This method is stronger and more exact for the panels, but you can **no longer attach beams** on these sides of the modified posts.



**Top hub** Mount magnets in the top hub on the same side as you've just mounted steel/magnetic tape.

Mount the magnet with the black dot **at front in the left slot** and with the black dot **at back in the right slot**.

## Circle dimension

How many beams do I need for making a circle, and what is the resulting circle diameter?

### 400 mm beams

Angle	Pcs/Circle	Dia. cm	Dia. inch
30°	12 pcs	153 cm	60.2"
45°	8 pcs	100 cm	39.4"

### 800 mm beams

Angle	Pcs/Circle	Dia. cm	Dia. inch
5°	62 pcs	1 834 cm	722.0"
10°	36 pcs	917 cm	361.0"
15°	24 pcs	612 cm	240.9"
22,5°	16 pcs	408 cm	160.5"
30°	12 pcs	306 cm	120.5"
45°	8 pcs	204 cm	80.3"
60°	6 pcs	153 cm	60.2"
90°	4 pcs	102 cm	40.2"

## Combine different heights

Remove the grey mag-tab part carefully from the hanger on the low graphic side.

Cut a new "Corner trim",  
Mini - Midi = 200 mm / 7.875"  
Mini - Maxi = 400 mm / 15.750"  
Midi - Maxi = 200 mm / 7.875"



## Join panels vertically



To join two rigid or semi-rigid panels vertically, attach 12,4 mm / 1/2" A-magnetic tape on the two panels respectively. Then join the panels by adding a 24,7 mm / 1" B-magnetic tape on top.

Alternatively, for straight sections, add a straight beam with steel tape to join the two panels.

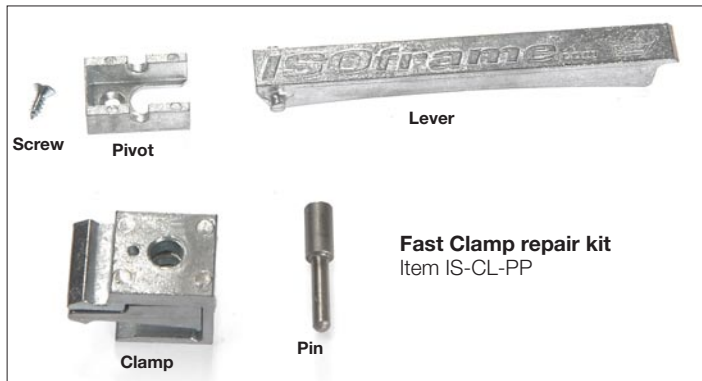
## Use the LED spotlight

For ISOframe we use the LEDspot with the "BannerUp" connector (80022) but if your customer want to use the "SnapUp" spot (80021) we have a solution for that.

Take the Flexiframe connector (80007) and a 50 mm / 2" long square tubing post connector, screw them together and you have a perfect new spotlight connector.



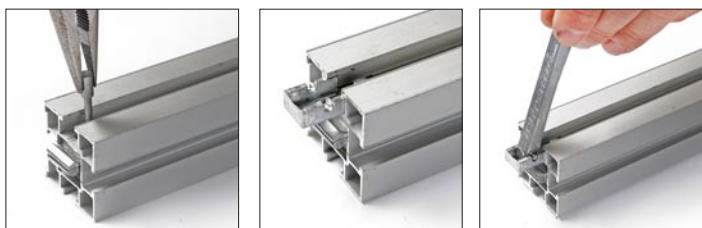
## Replacement Fast-Clamp



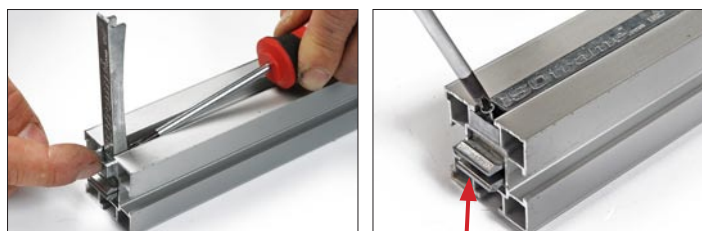
**1.** With the lever in the closed position, remove the small screw at the top of the lever. Push the lever and pivot out to the end of the bar. You may need to lift the lever slightly and tap with a hammer.



**2.** Remove the pin first, followed by the clamp. Replace the clamp, with the larger hole facing up.



**3.** Replace the pin. Mount the pivot and the lever.



**4.** Push the lever back into the channel and push down the pin and gently tap the pivot to put back into place. Replace the small screw with a new one. Press the Clamp upward when fastening the screw.

## Extra stability

### Method 1

Attach a 400 or 800 beam at the reverse of the post and the other side in a wall or some other stable surface. Use a Fast-clamp connector plate in the wall. See "Fast clamp connector plate".



### Method 2

Attach two 400 or 800 beams on the reverse side of the system and on a base post.

A weight may be placed on this extension if the design of your display tends to lean forward, as with the addition of a door section.

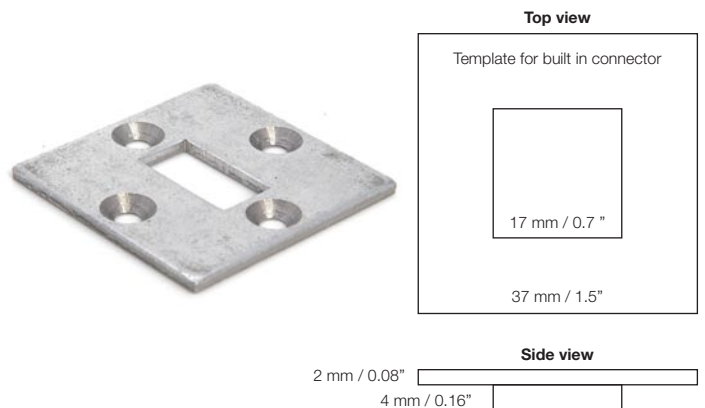


## Fast clamp connector plate

To connect a "Fast clamp" in a shelf or wall.

Cut out from the shelves/wall (see template) and screw it on place.

Please observe, the screw must be in the level and not go over the edge on the plate!



**Please note:** This fast clamp connector plate can be purchased separately (see Component List) in case you want to produce locally your own table tops/shelving for the ISOframe counters and desks.

## Double sided option – Graphic width

Graphic panel widths on reverse side of the beams on Compact and Exhibit.  
All front side graphics remain 800 mm / 31.50"

### Inner (concave) curved beam:

Angle	Panel width	Kicker & Hanger width
5°	805 mm / 31.69"	804 mm / 31.65"
10°	809 mm / 31.85"	808 mm / 31.81"
15°	813 mm / 32.01"	812 mm / 31.97"
22,5°	816 mm / 32.13"	815 mm / 32.09"
30°	823 mm / 32.40"	822 mm / 32.36"
45°	835 mm / 32.87"	834 mm / 32.83"
90°	867 mm / 34.13"	866 mm / 34.09"

### Outer (convex) curved beam:

Angle	Panel width	Kicker & Hanger width
5°	795 mm / 31.30"	794 mm / 31.26"
10°	792 mm / 31.18"	791 mm / 31.14"
15°	788 mm / 31.02"	788 mm / 31.02"
22,5°	783 mm / 30.83"	782 mm / 30.79"
30°	777 mm / 30.59"	776 mm / 30.55"
45°	766 mm / 30.16"	765 mm / 30.12"
90°	732 mm / 28.82"	731 mm / 28.78"

## Custom-made kickers and hangers

For local production of custom-size kickers and hangers.



Order a set of Kickers & Hangers in 900 mm / 35.4" length (Item IS-REAR-KH) with one side premounted.



Cut the stiffener for your Kickers & Hangers 1 mm / 0.40" shorter than the graphic panel width, squarely cut.



Remove the protection strip from the tab.



Mount the tab 0,75 mm / 0.030" from the edge of the stiffener.

## Support-Multi connector

The Support-Multi connector is an L-profile with a fastening screw. It is mainly used as an extra security feature for horizontal beams when these are heavily loaded, for example when using very large media screens on the system. The connector can also be used as a multi connector to attach different objects to the system (the post).

**Support-Multi connector Item IS-9001**

